

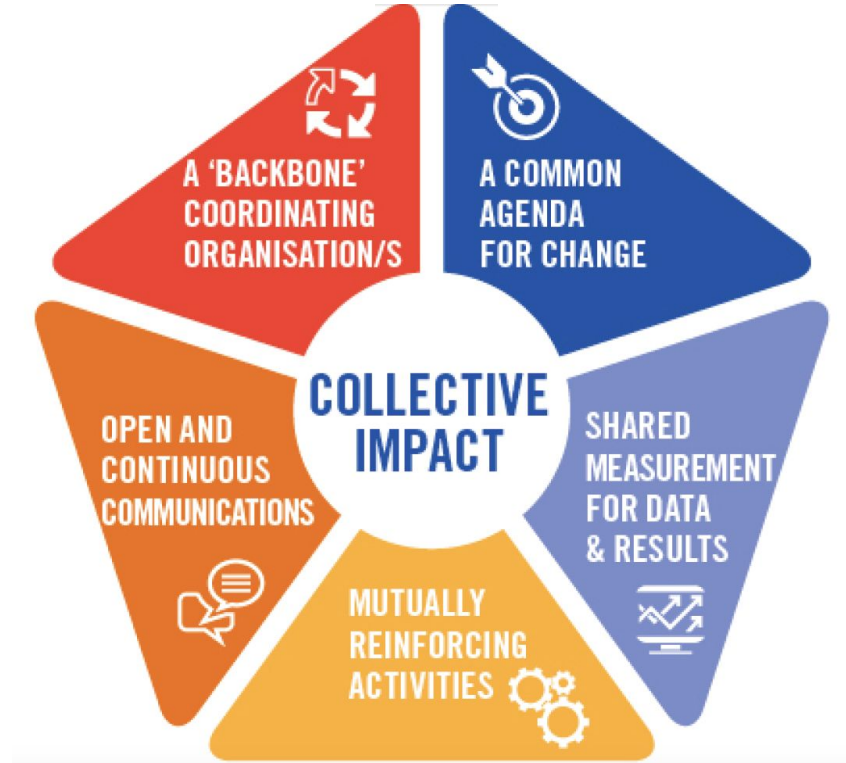


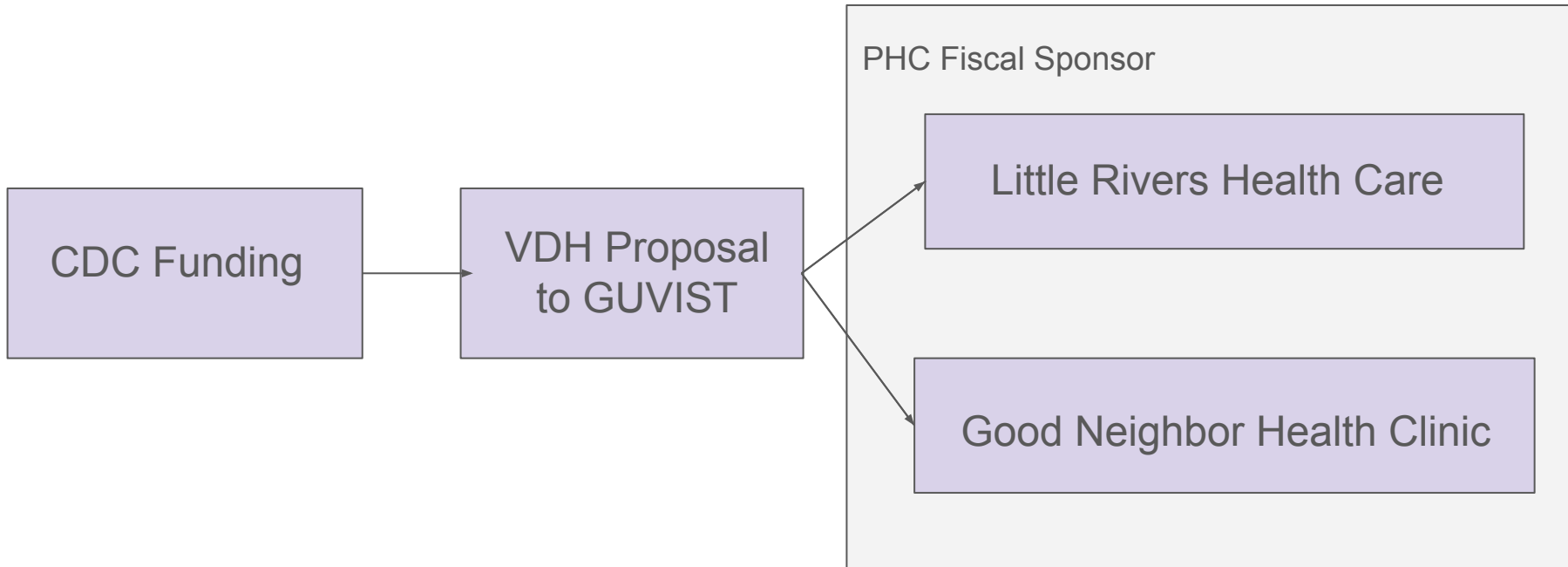
# Clinical Community Integration

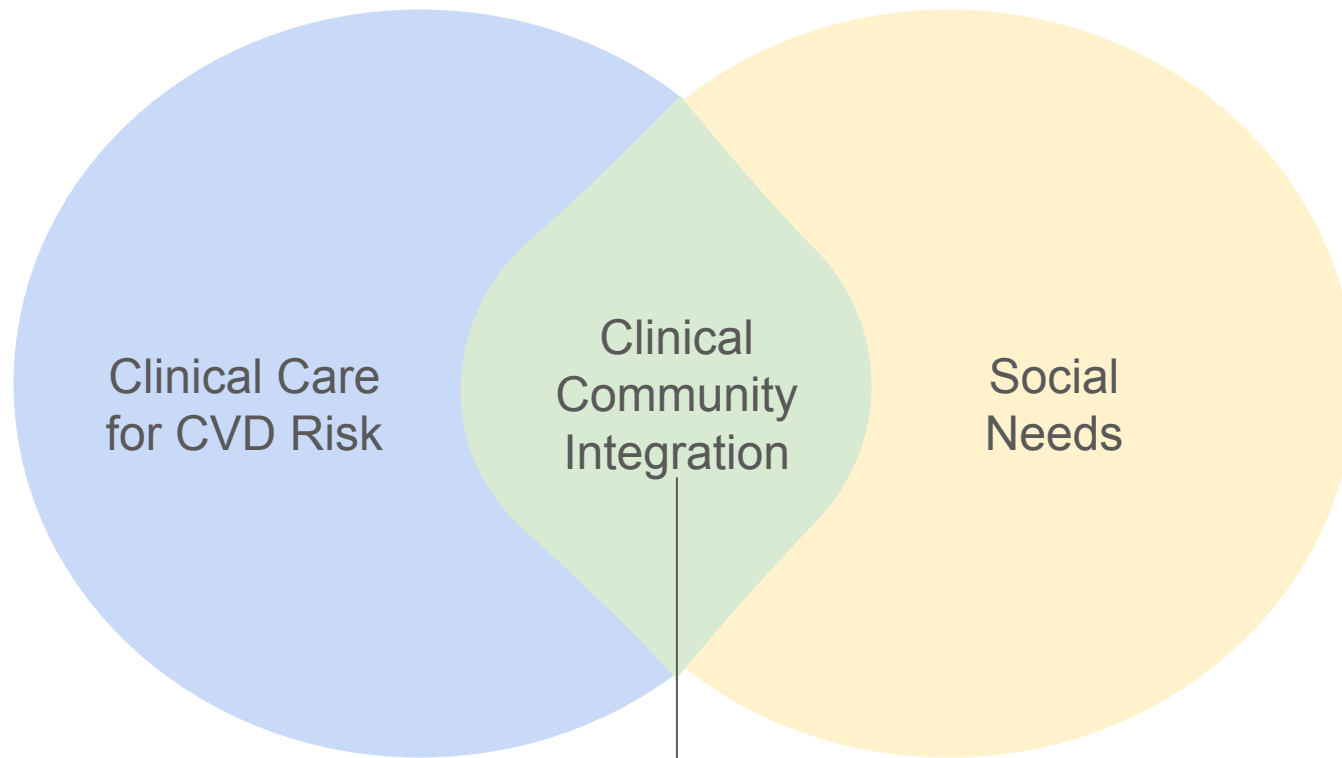
Greater Upper Valley Integrated Services Team

April 2025

[GUVIST.org](http://GUVIST.org)



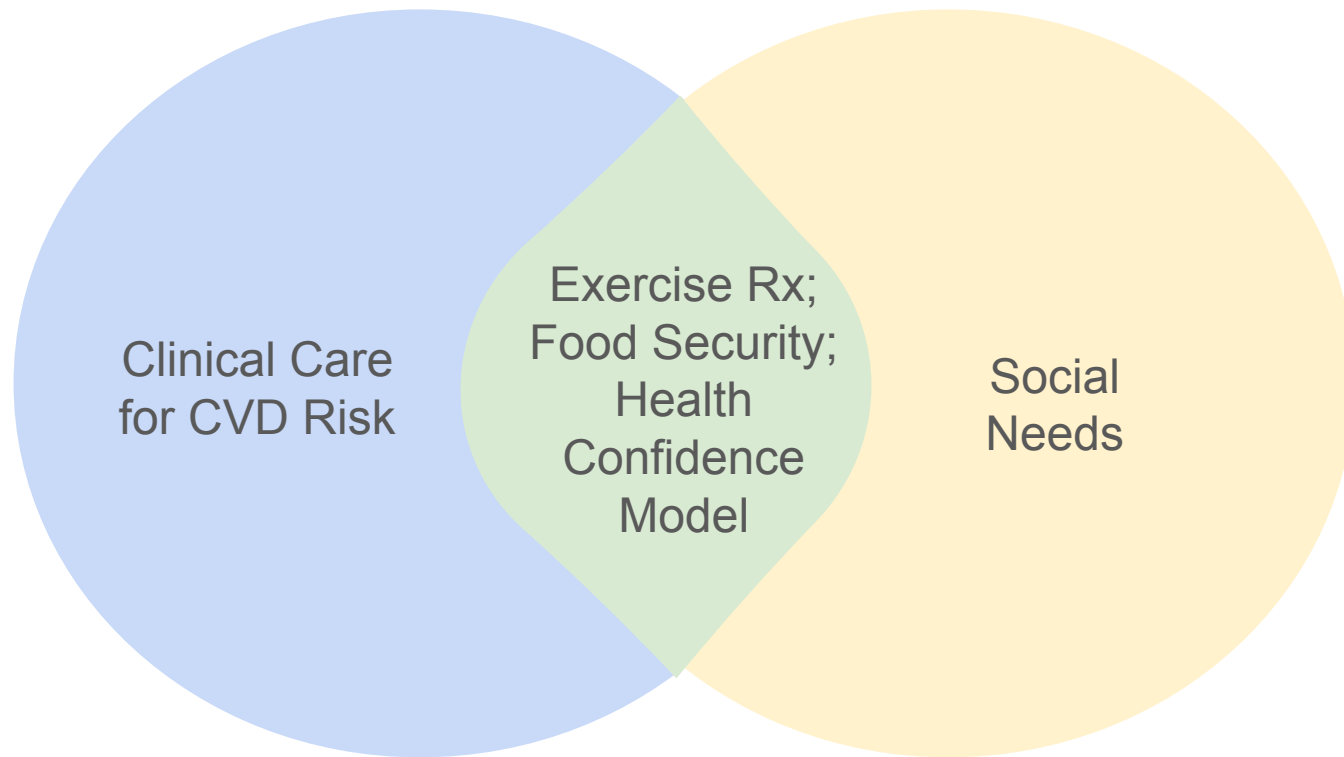




Health related social needs screening  
Tracking and monitoring social needs  
Referring to community social supports

Bidirectional communication  
Team based care  
Data tracking/health outcome reporting

## Good Neighbor Health Clinic Integration Incubation



# Little Rivers Integration Incubation

## FOOD FARMACY TIMELINE

### 2020 – COVID-19

Striking increases in food insecurity due to COVID-19 prompted programs like Everyone Eats VT and our Care Coordinator home delivered food bags.

COVID-19  
CCC delivery  
VT Everybody Eats

20

Bi-State HRHI  
Willing Hands partner

21

### 2022 – Food as Medicine

LRHC hired Emilie Perry to be the lead program developer of our Food Farmacy to incorporate food as medicine into our patients' health plan.

Hire Emilie Perry  
Partnered with RD,  
Ashley Wentworth

22

### 2023 Showing the Data

LRHC works with Qlik (Lauri at Bi-State) to collect data on key vital signs and demographics to grow our evidence for the positive impact of food on mitigating health conditions.

Establish data  
collection in Qlik

23

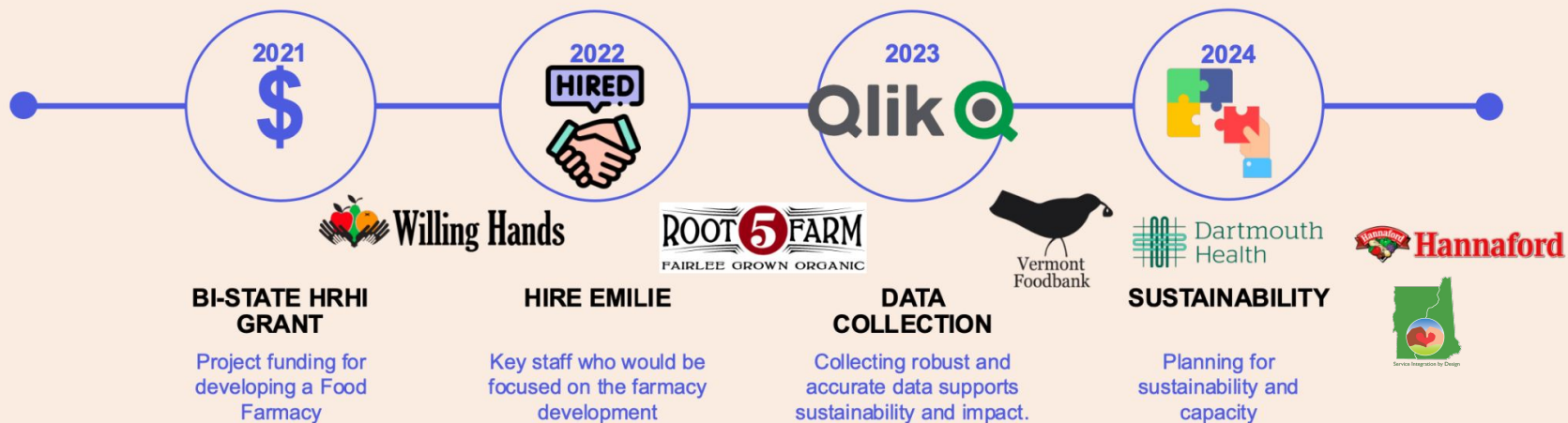
Partner with VT  
Food Bank and DH-  
CARHE  
Partner with VDH  
and GUVIST

24



# Little Rivers Network Development

## PARTNERSHIP MILESTONES



## Little Rivers + VDH Common Agenda



- Health related social needs screening, tracking, monitoring
- Referrals to community social supports
- Bidirectional communication
- Team based care
- Data tracking & health outcome reporting



## Little Rivers Data Measures

- Social drivers of health screener - Hunger as a Vital Sign, Nutritional Needs, Quantifying Nutritionally Sensitive Populations
- WIC, SNAP eligibility
- Enrollment in Food Farmacy
- Amount of food provided
- Referrals to social supports influential to CVD risk + Closed Referrals
- Evaluation of Food Farmacy
- Clinical Impact on CVD Risk



# Little Rivers Mutually Reinforcing Activities

**Backbone Support:**  
GUVIST, CARHE



**Little Rivers Team:** Care  
Coordinators, Medical Staff,  
Grants Manager, Food Farmacy  
Program Developer

**Funding:**  
VDH, DH  
Hannaford,  
Bi-State



Food Farmacy

**Data:** Social Driver  
Screeners, Referrals, Pt  
Panels in Qlik,  
Evaluation Survey



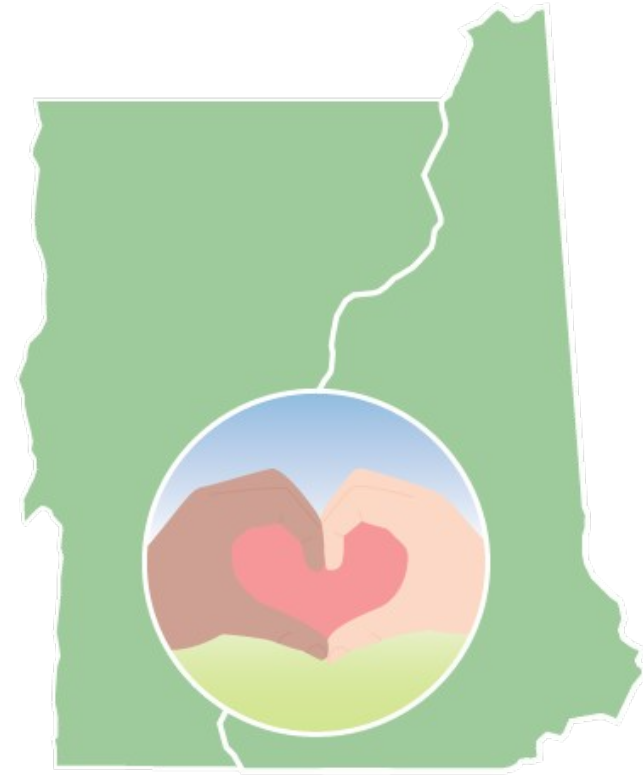
**Food:** Willing  
Hands, VT Food  
Bank, Local  
Farms & CSAs



**Food Distribution:**  
Van, Volunteers

# Promises of Integration

- Continuity of Work with a Backbone
- Amplified Impact
- Quality Improvement of Systems
- Shared Accountability/Effort → Shared Success
- Efficiency, Effectiveness, Responsiveness
- Satisfaction for Staff and Community
- Organizational Trust
- Intentionality
- Community Engagement/Co-Creation of Change
- Attractiveness to Large Funding Sources



## Sustainability Factors

## Little Rivers Food Farmacy Sustainability Strategies

**Process Factors** (Compelling Case,  
Ongoing Reflection)

**People Factors** (Equity/Inclusion in  
Design, Strong Partner Ties,  
Community Engagement)

**Impact Factors** (Data Informed,  
Progress Tracked and Reported,  
Influence Policy/Systems Change)

**Resource Factors** (Human, Financial,  
Partner Contribution to Shared  
Outcomes)