

What is GUVIST?



GUVIST is a *learning network, integration incubator* and *technical assistance entity*

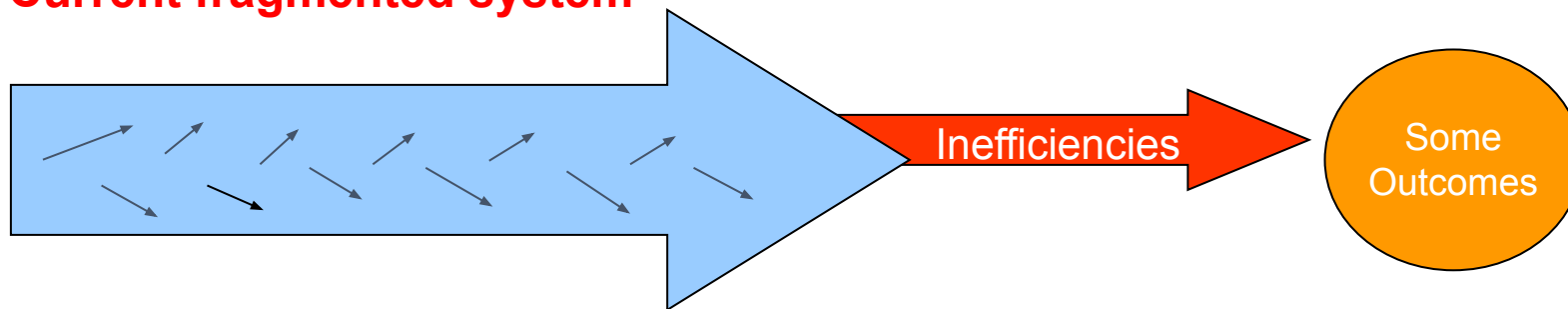
developing *integrated networks of care delivery*

helping service providers *operate interdependently by design*

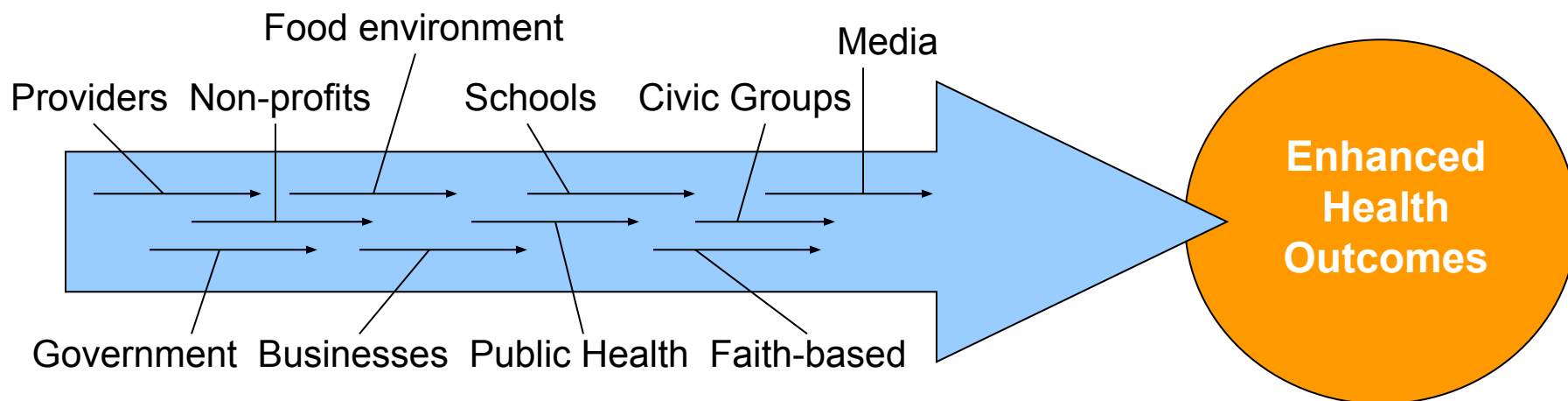


What is Integration?

Current fragmented system



Intentionally integrated system



Source: Paul Epstein Results that Matter Team

What's the Promise of Integration?



- Continuity of Work with a Backbone
- Amplified Impact
- Quality Improvement of Systems
- Intentionality
- Shared Accountability/Effort → Shared Success
- Efficiency, Effectiveness, Responsiveness
- Satisfaction for Staff and Community
- Organizational Trust
- Community Engagement/Co-Creation of Change
- Attractiveness to Large Funding Sources

Introducing the GUVIST Integration Guide

1. Integration Incubation

Steps Overview:

Submit Proposal for Change form
Review, develop and refine proposal with
EC approval

Tools:
Proposal for Change form
Review Criteria

2. Service Delivery Network Development

Steps Overview:

Identify and incorporate key players and
atypical partners into network
Map current landscape and clarify goals
Consolidate & make meaning of available data
Initial Collaboration Evaluation
Develop and center around Integration
Document Theory of Change

Tools:
Project Charter
Initial Collaboration Evaluation
Theory of Change
Integration Aim Statement
Fishbone diagram
Flowchart
5 Whys

3. Implementation Coordination

Steps Overview:

Create Logic Model
Create Community Engagement Plan
Determine strategies to address Integration Aim
Define measures of success
Coordinate Mutually Reinforcing Activities
Identify and pursue funding needs

Tools:
Logic Model
Community Engagement Toolkit
Data Collection and Shared
Measurement Plan
Project Storyboard

4. Sustainability and Evaluation

Steps Overview:

Collect data
Plan for handoff
Finalize a Project Report
Network Collaboration Evaluation

Tools:
Project Report
Network Collaboration Evaluation

A step-wise and
ever evolving
**Integration
Primer** with
useful tools that
draws from
lessons that
were part of the
last year's
**Integration
Curriculum**

Integration Incubation



- Fill out Proposal for Change form to describe problem to be addressed and how integration may be the solution

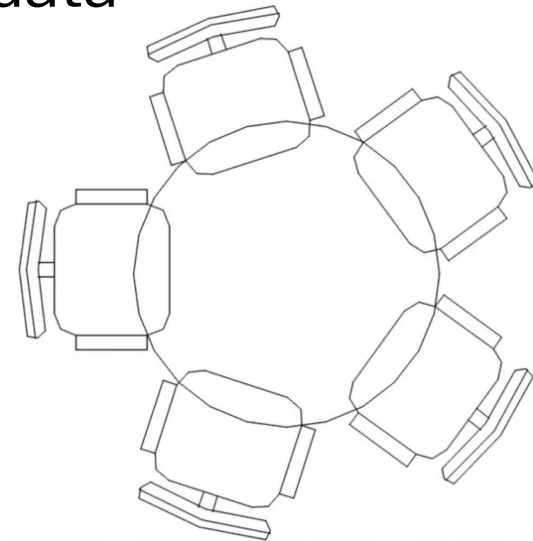


- Review and refine proposal; Executive Council approval using criteria such as clarity and feasibility

Service Delivery Network Development



- Identify and incorporate key players and atypical partners into network
- Map current landscape; clarify goals
- Synthesize and make meaning of data
- Conduct Initial Collaboration Evaluation
- Develop integration aim
- Document theory of change



Implementation Coordination



- Create logic model; Determine strategies addressing integration aim
- Make Community Engagement Plan



- Define measures of success
- Coordinate mutually reinforcing activities
- Identify and pursue funding needs

Sustainability and Evaluation



- Collect data for continuous improvement
- Plan for handoff from the Integration Catalyst
- Finalize a Project Report
- Conduct Network Collaboration Evaluation

