



Evaluating Collaboration

Greater Upper Valley Integrated Services Team
September 2024
GUVIST.org

Where are we going?

1. What is Integration?
2. The Common Agenda & Network Development
3. Community Engagement
4. Data & Shared Measurement
5. Mutually Reinforcing Activities
6. Funding Challenges & Opportunities
7. Building a Sustainability Plan
8. **Evaluating Collaboration**
9. Putting it all Together: GUVIST Process, Successes to Date, Network Updates
10. Call for Proposals/Integration Incubation



August Recap:



Sustainability =

People

+

Process

Impact

+

Resources

Evaluating Collaboration



Learning Objectives:

1. How did our initial evaluations shape GUVIST?
2. Why is collaboration evaluation important and what does it teach us?
3. How do we measure it?

Where have we been?



Organizational Network Analysis (ONA) on GUVIST

→ Are we an integrated service delivery network?



Social Support Network Analysis Project (SSNAP) on Early Childhood network

→ Are we ready for collective action in this sector?



Family Level Network Analysis (FNA) on families accessing early childhood services

→ How does the state of the network impact families?

Organizational Network Analysis

→ Are we an integrated service delivery network?

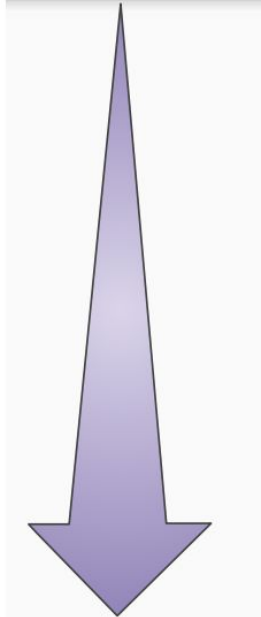
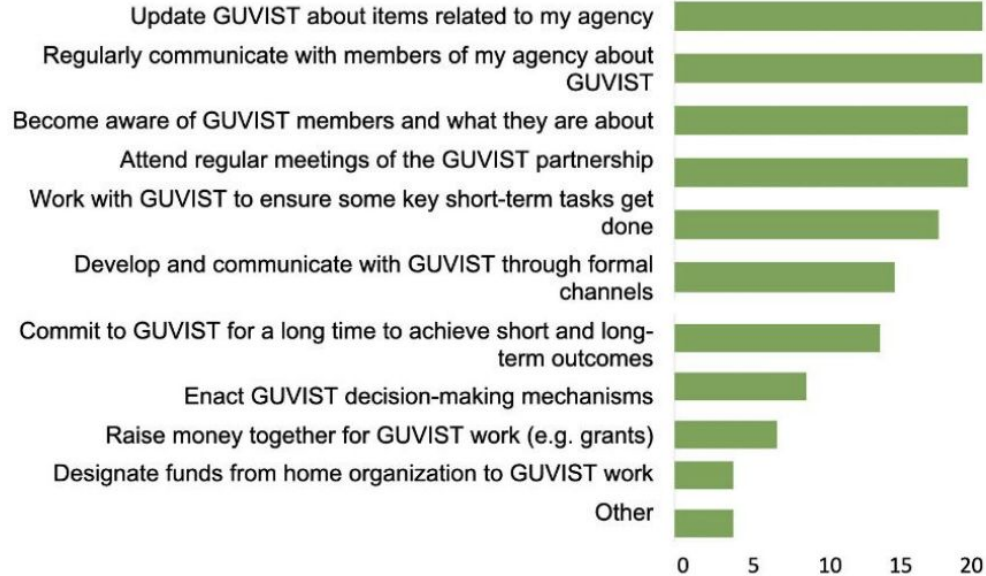


Interprofessional
Communication

Strategies
& Tasks

Leadership &
Decision-Making

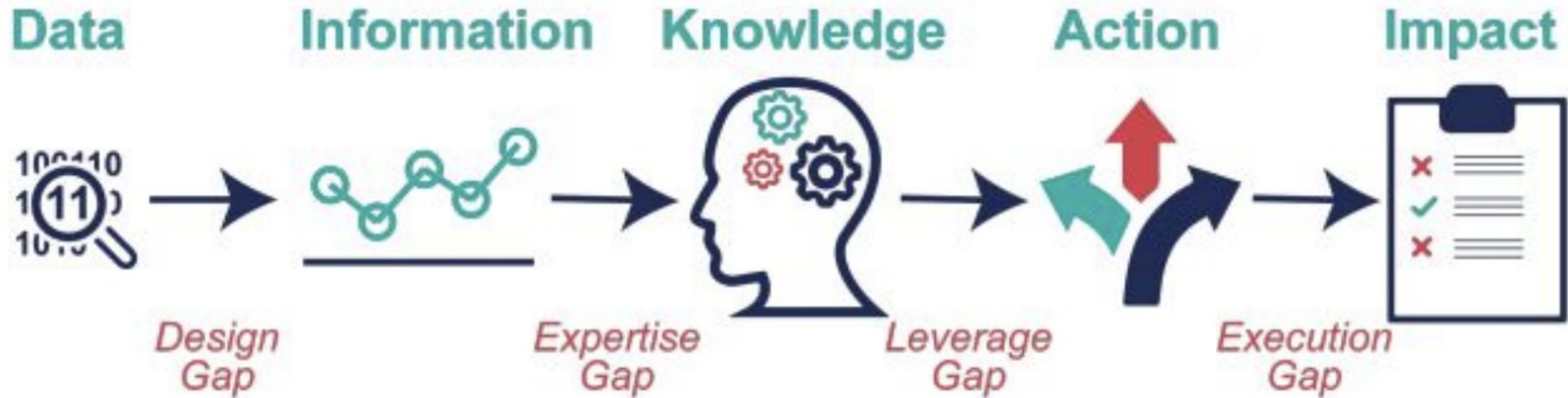
Purpose



From Drs. Woodland & Mazur, October 2020 (Figure 5)

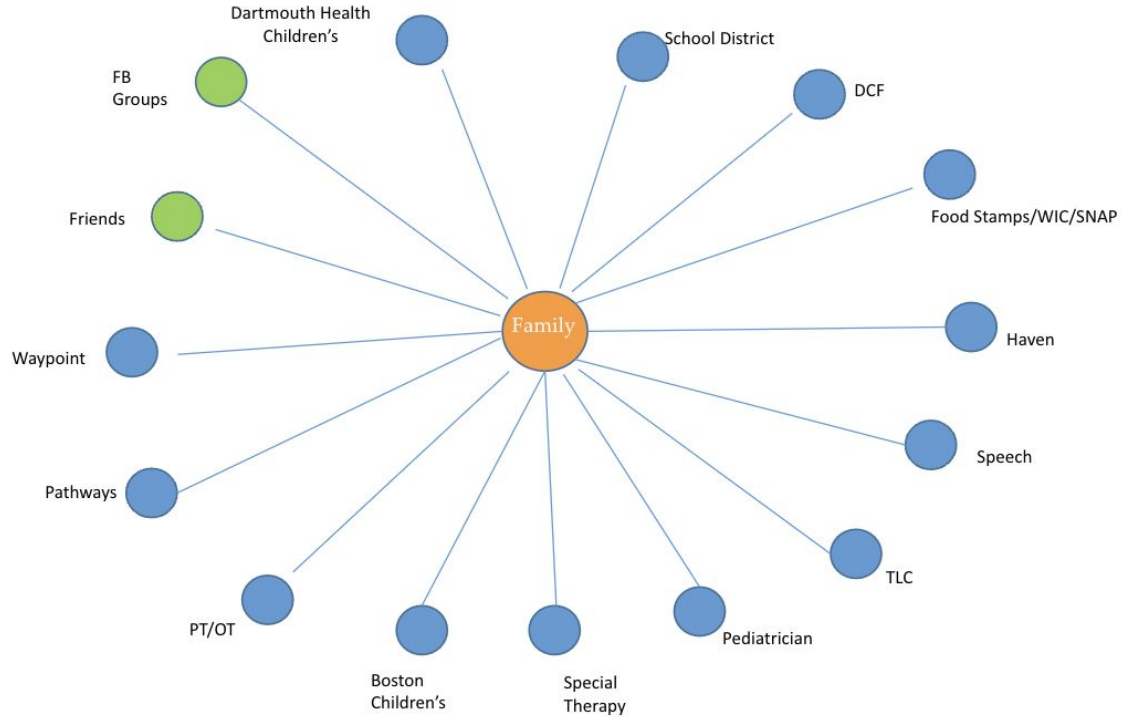
Social Support Network Analysis Project (SSNAP)

→ Are we ready for collective action in this sector?



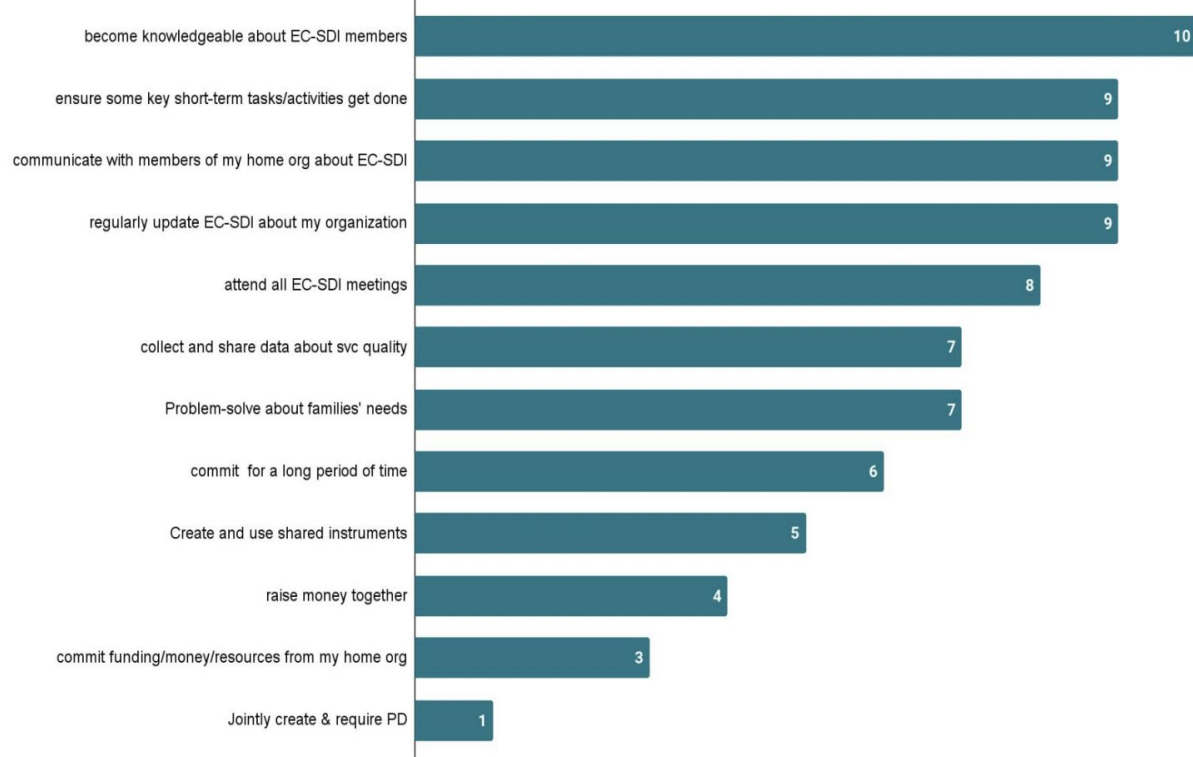
Family Level Network Analysis (FNA)

→ How does the state of the network impact families?

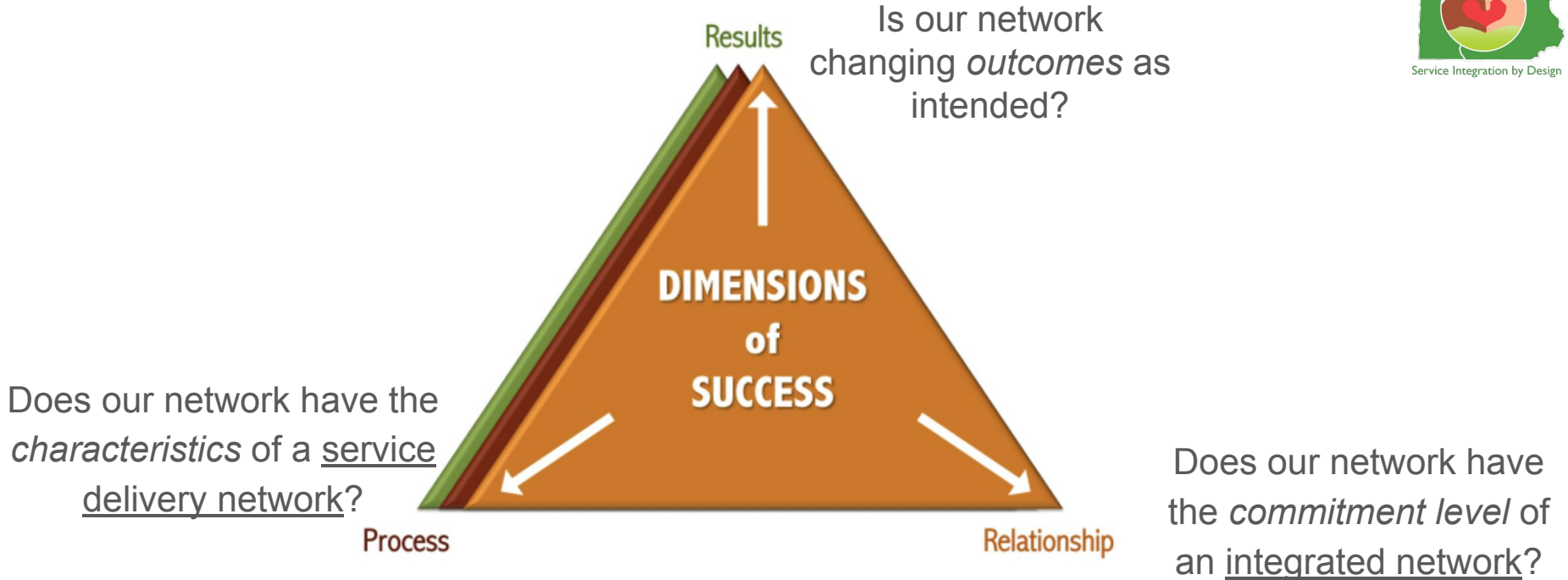


Social Support Network Analysis Project (SSNAP)

→ How are you willing to respond to the data?



What did we learn?



Source: <https://interactioninstitute.org/change-networks-keep-telling-the-evolving-story/>



What other factors are important to successful collaboration?

Have you used any tools for this type of evaluation?