



# Data & Shared Measurement

Greater Upper Valley Integrated Services Team

April 2024

[GUVIST.org](http://GUVIST.org)

# Where are we going?

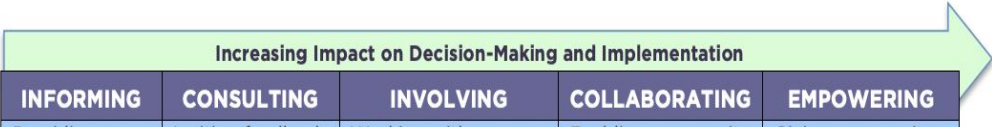
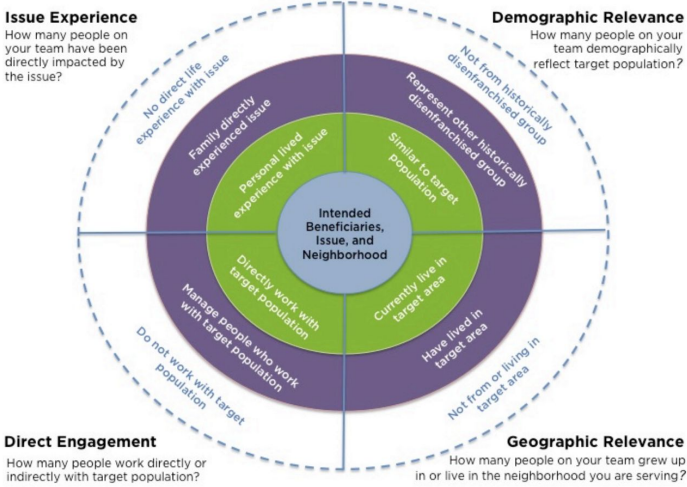
1. What is Integration?
2. The Common Agenda & Network Development
3. Community Engagement
- 4. Data & Shared Measurement**
5. Mutually Reinforcing Activities
6. Funding Challenges & Opportunities
7. Building a Sustainability Plan
8. Evaluating Collaboration & Lessons Learned
9. Putting it all Together: GUVIST Process, Successes to Date, Network Updates
10. Call for Proposals/Integration Incubation



# March Recap: Building a community engagement plan

## Who

## How



# Data & Shared Measurement



## Learning Objectives:

1. Consider types and characteristics of data
2. How do we view data with an equity lens and how do we lessen disparities with integration?
3. Why is shared measurement important for integration?

Learning



Integration



Accountability

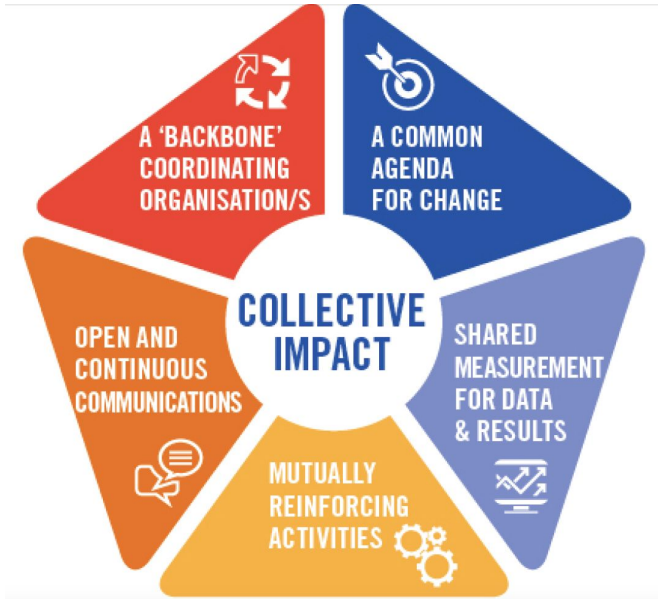


# What is an Equity Lens?



*“Equity is fairness and justice achieved through systematically assessing disparities in opportunities, outcomes, and representation and redressing [those] disparities through targeted actions”*

# What is Shared Measurement?



*“Identifying common metrics for tracking progress toward a common agenda across organizations, and providing scalable platforms to share data, discuss learnings, and improve strategy and action”*

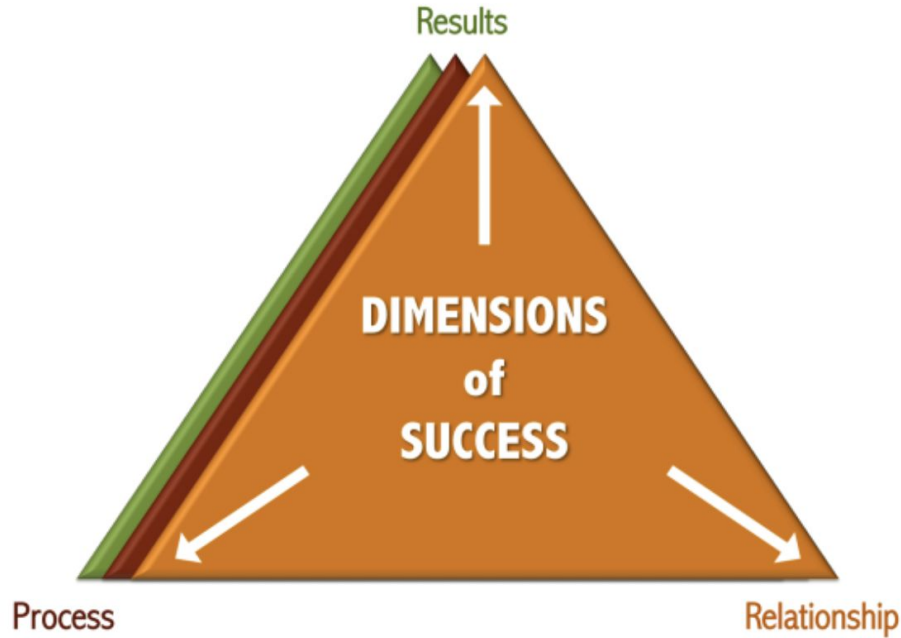
# What about Shared Measures?

- Valid/reliable measure of goal
- Understandable to all stakeholders
- Produced by a trusted source
- Can be compared across agencies/regions
- Affordable to gather and report
- Data available consistently over time
- Data point is changeable by local action
- Indicator linked to goal





# Measuring Success



Source: <https://interactioninstitute.org/change-networks-keep-telling-the-evolving-story/>